

“EVO” Storage Information

A large amount of storage is available for use in the recording studios as a result of the implementation of the Studio Network Solutions “EVO” system. The EVO offers several advantages over the previous system of local storage on each studio Mac, such as:

- Personal storage for each user, accessible only by them.
- Much larger amounts of storage available per user.
- Projects available in any studio without the need to transfer data.
- Lesson materials available for all users to take their own copy of.

The use of EVO based storage replaces any previous systems for saving sessions in the recording studios.

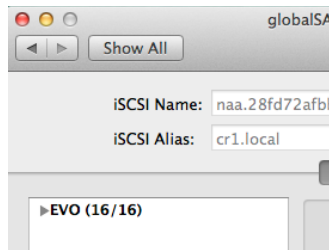
There are two types of storage offered by the EVO, which are each connected via different protocols. The method of connecting is almost identical from a user’s point of view in each case however, it is important to know that differences exist to ensure your use of the EVO is as efficient as possible.


- 1) iSCSI storage:
 - **Volumes** named “**Surname, Forename**”, e.g. “Allen, Chris”.
 - Highest performance storage which should be used as much as possible.
 - 30GB fixed size partition.
 - Appears to operating system as an internal hard drive.
 - **Please note:** Deleted files will remain in the Trash using space until the trash is emptied.

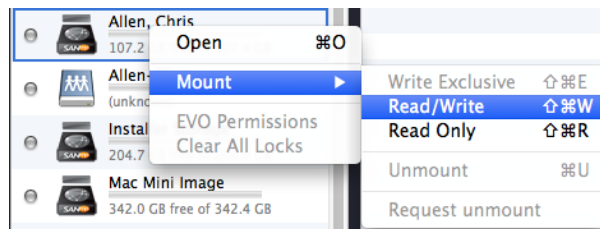
- 2) Network Attached Storage:
 - **Shares** named “**Drive-Name**” and the “**Storage**” share specifically.
 - High performance storage, intended for sessions not currently being used.
 - Only required to be used once 30GB iSCSI storage has been filled.
 - More than fast enough to work from, but technically not as efficient as iSCSI volumes.
 - 100GB variable size storage.
 - Appears to operating system as a shared network drive (which requires a log in to mount).

Using EVO iSCSI Storage

- 1) If starting up the mac for the first time you will be presented with two windows once you have logged into the “Student” account.
The first is titled “globalSAN iSCSI Initiator” and the second “EVO ShareBrowser”.
- 2) In the globalSAN window, please wait for the software to connect to all available drives on the EVO. This has been completed once “**EVO 16/16**” is displayed in the left hand column:



- 3) You may now close the globalSAN window if you wish.
- 4) **If the mac was being used by someone before you, you do not need to wait for this to complete.**
- 5) In the ShareBrowser window (shortcut also on dock: ) , log in using surnameforname as the user name (e.g. for Chris Allen: allenchris) and the default password “letmein1234”. (You may change this from File > Change User Password once logged in if you wish.)
- 6) Right click your scratch disk (Allen, Chris in this example) and select Mount > Read / Write - note the shortcut Cmd+Shift+W for future reference.



- 7) The drive will appear on the desktop shortly after - use this drive as you would any drive inside a computer.



- 8) Once finished working, take a backup copy of your work on an external drive.

Please note:

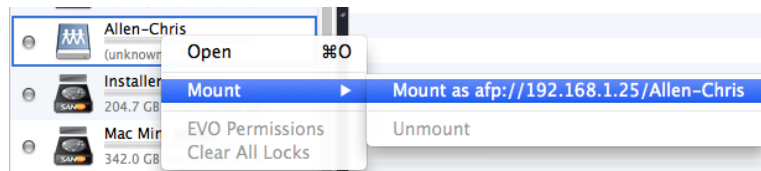
It is your responsibility to ensure all work stored on the EVO is backed up elsewhere.

- 9) Using ShareBrowser right click your scratch drive and select Mount > Unmount - note the shortcut Cmd+U for future reference.
- 10) Log out of ShareBrowser via File > Log Out confirming “Yes” when asked about leaving drives mounted or unlocking locked files.

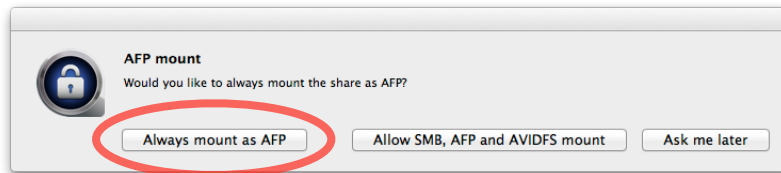
Using EVO Network Attached Storage

There are two specific uses of network attached storage on the EVO: sharing commonly available files and providing additional storage space beyond your iSCSI allowance.

- 1) Follow points 1-5 in the procedures for mounting EVO iSCSI storage to log into EVO ShareBrowser.
- 2) In EVO ShareBrowser, right click your share (Allen-Chris in this example) and select Mount > Mount as afp://....



- 3) Many shared drives (such as Multitrack-Masters or Mixing-Mastering) will mount immediately.
- 4) If asked whether you would like to always mount as AFP, select the “Always mount as AFP option”.



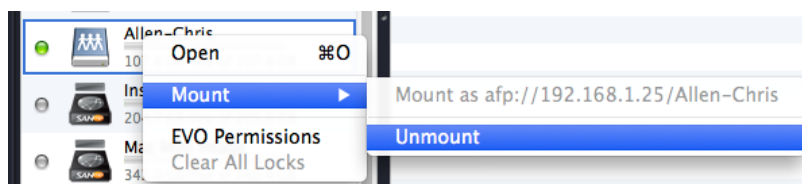
- 5) If asked to provide login details (via a Mac OS dialog box) **use the same details you use to log into ShareBrowser with.**
- 6) The drive will appear on the desktop shortly after - use this drive for storing work **which you have backed up elsewhere.**

Please note:

When working from the “Storage” share, you will only be able to modify files / create folders within the named folder created specifically for you and you will not be able to modify files on common shares such as Mixing-Mastering at all.

It is your responsibility to ensure all work stored on the EVO is backed up elsewhere - RAID is not a backup, the EVO can have storage issues like any spinning hard drive.

- 7) When finished working, in ShareBrowser right click the Storage drive and select Mount > Unmount.



- 8) **It is not necessary to unmount commonly shared drives such as Multitrack-Masters or Mixing-Mastering before logging out.**
- 9) Log out of ShareBrowser via File > Log Out saying “Yes” when asked about leaving drives mounted or unlocking locked files.